

# HYDRAULIC GUIDED BEND AND TENSILE TESTING MACHINES

## Model 273-25, 25-Ton Guided Bend and Tensile Tester

### FOR FIELD AND SHOP APPLICATIONS

- Both Guided Bend & Tensile Strength Testing
- Includes Gauge with High Level Indicator, 2-Speed Manual Pump, (1) Set of Pulling Jaws, (1) Die and Plunger Set, (1) Steel Carrying Case
- Optional Choice of Materials to Meet Code
- Optional Accessories: Electric Pump
- For Field or Shop Applications



**SAWYER MFG COMPANY**

1031 N. Columbia Place • Tulsa, Oklahoma 74110 U.S.A.

Phone: (918) 834-2550 • Fax: (918) 834-0318

E-Mail: [info@sawyermfg.com](mailto:info@sawyermfg.com)

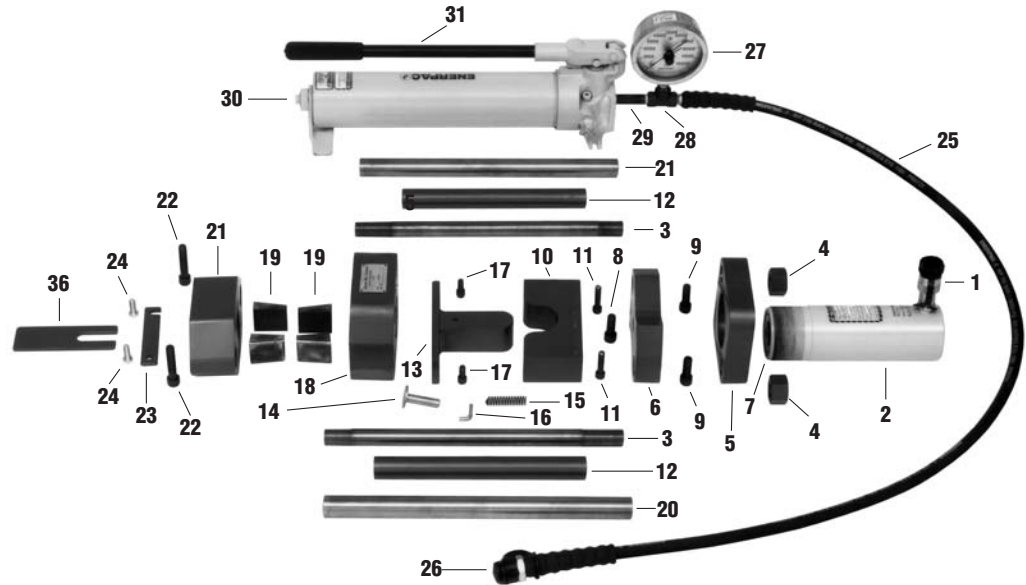
Web Site: [www.sawyermfg.com](http://www.sawyermfg.com)

***Sawyer products are sold exclusively through distributors in the U.S. and abroad.  
Please contact us for the name of your nearest distributor.***

# MODEL 273-25, 25-TON GUIDED BEND AND TENSILE TESTER

## Parts List Model 273-25

32 - Steel Carrying Case



## Parts List

No.	Amount	Dwg./Part No.	Description/Name	No.	Amount	Dwg./Part No.	Description/Name
1.	1	526-8-F	1/2 Hydraulic Coupling-F	19.	4	A115A*	Jaw*
2.	1	526-2	Hydraulic Cylinder	20.	2	B29CN-C	Compression Shaft
3.	2	B29CN-A	Tension Shaft	21.	1	B25AL	Traveling Head
4.	2	517-30	Nut	22.	2	519-68	Bolt
5.	1	B12BE	Base	23.	1	B25AO-B	Jaw Retainer
6.	1	B12BF	Sub Base	24.	2	519-37	Bolt
7.	1	A41DG	Adaptor	25.	1	527-1	Hydraulic Hose Assembly
8.	1	519-66	Bolt	26.	1	526-8-M	1/2 Hydraulic Coupling-M
9.	2	519-69	Bolt	27.	1	526-12	Gauge
10.	1	B116*	Die*	28.	1	526-9	Pipe "T"
11.	2	519-68	Bolt	29.	1	526-11	Pipe Nipple
12.	2	B29CN-B	Spacer	30.	1	526-5	Hydraulic Pump
13.	1	B116*	Plunger*	31.	-	-	-
14.	1	A110B-A	Plunger	32.	1	B13R-B	Metal Case
15.	1	A110B-B	Spring	33.	1	526-6	Electric Pump (optional-not shown)
16.	1	A110B-C	"L" bolt	34.	1	526-7	Pneumatic Pump (optional)
17.	2	519-34	Bolt	35.	1	A3S-B	Conversion Chart (not shown)
18.	1	B25AK	Stationary Head	36.	1	A119V	Jaw Tensioner

\*Determined by sample thickness and code requirements

### Other Sawyer Manufacturing Products:

Beveling Machines • External Line-Up Clamps • Internal Line-Up Clamps • Hydraulic Dent Removers  
Tractor-Mounted Bending Shoes • Accuwrap Manual Pipe Wrapping Machine • Manual Pipe Expanders • Pipe Hooks and Inserts  
Aluminum Hand Clamps • Coupon Cutters



## SAWYER MFG COMPANY

1031 N. Columbia Place • Tulsa, Oklahoma 74110 U.S.A.

Phone: (918) 834-2550 • Fax: (918) 834-0318

E-Mail: [info@sawyeremfg.com](mailto:info@sawyeremfg.com)

Web Site: [www.sawyeremfg.com](http://www.sawyeremfg.com)

**Sawyer products are sold exclusively through distributors in the U.S. and abroad.  
Please contact us for the name of your nearest distributor.**