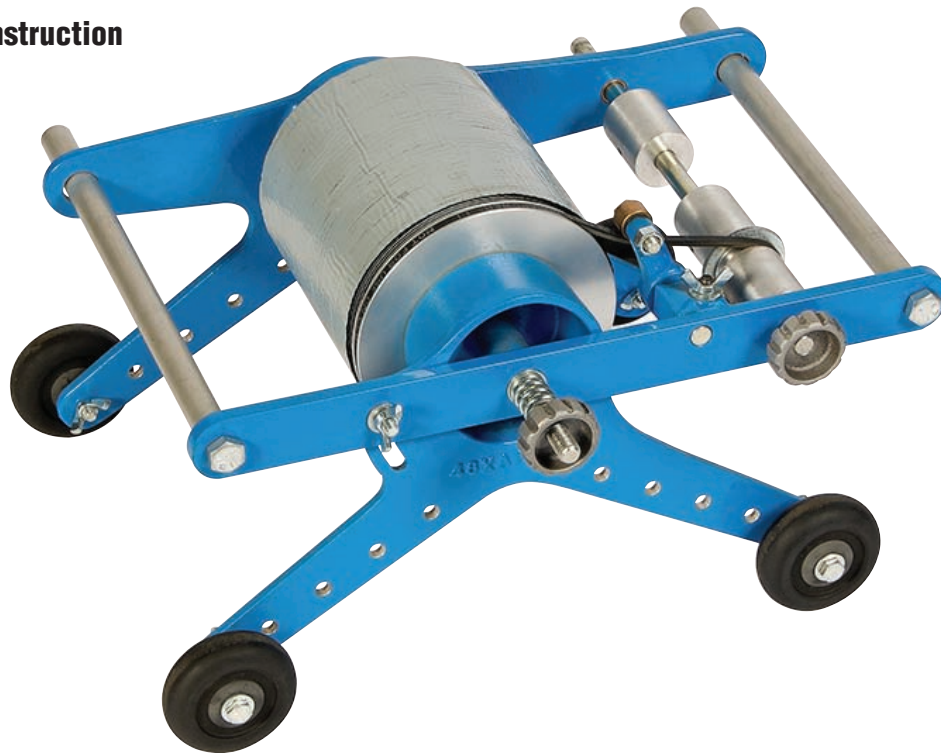


ACCUWRAP™ II

Hand Held Pipe Wrapping Machine

- Applies Release Liner or Plain Tape Coatings
- Separate Tension Adjustments For Tape and Release Line Take-Up
- Will Accommodate Tape With 1½" or 3" (38.1mm - 76.2mm) Diameter Cores
- Ideal For Both Spiral and Cigarette Wrapping
- Three Size Machines Fit Tape Widths 2"-6" (50.8mm - 152.4mm), 6"-12" (152.4mm - 304.8mm) and 12"-18" (304.8mm - 457.2mm)
- Accuwrap Can Be Used On 4" (101.6mm) and Larger Pipe
- Very Low Profile, Requires Less Clearance
- Lightweight Construction
- Easy to Operate



SAWYER MFG COMPANY

1031 N. Columbia Place • Tulsa, Oklahoma 74110 U.S.A.

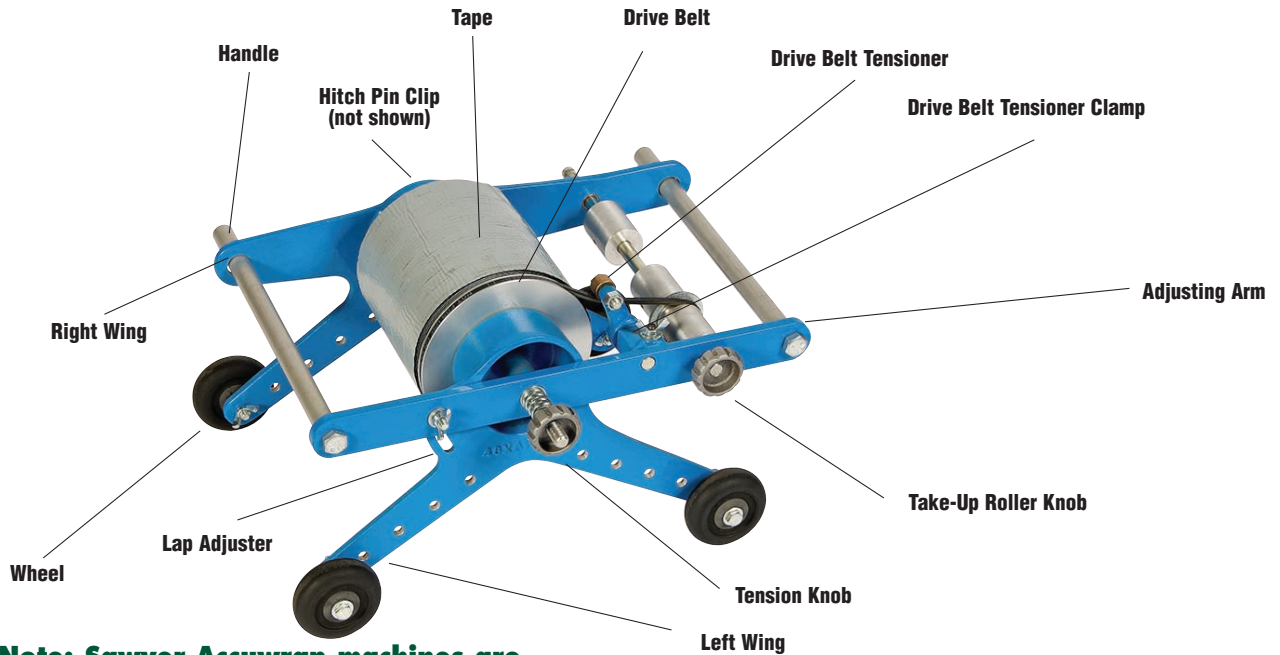
Phone: (918) 834-2550 • Fax: (918) 834-0318

E-Mail: info@sawyerfmfg.com

Web Site: www.sawyerfmfg.com

***Sawyer products are sold exclusively through distributors in the U.S. and abroad.
Please contact us for the name of your nearest distributor.***

ACCUWRAP™ II



Please Note: Sawyer Accuwrap machines are sized by the width of the wrapping tape they use; 2"-6" (50.8 - 152.4mm), 6"-12" (152.4mm - 304.8mm) and 12"-18" (304.8mm - 457.2mm). Any Accuwrap machine will fit any size pipe.

Wheels - Set wheels as far apart as possible without the machine or roll of tape rubbing on the pipe.

Loading Tape - Release Liner - (see diagram)

1. Loosen TENSION KNOB until HITCH PIN CLIP can be pulled out and RIGHT HAND SIDE can be removed.
2. Place new roll of tape over CENTER SHAFT so the tape will unroll from the top toward the TAKE-UP ROLLER.
3. Adjust TAKE-UP ROLLER to the tape width.
4. Replace RIGHT HAND SIDE and HITCH PIN CLIP.
5. Separate about 12" of tape from the release liner, pull release liner over the top and around the TAKE-UP ROLL - the end of the release liner may be attached to the TAKE-UP ROLLER either with tape or by wrapping around the roller. Take up the slack release liner by turning the TAKE-UP ROLLER KNOB.
6. Adjust the belt tension on the take-up roller by loosening the DRIVE BELT TENSION NUT, pushing the DRIVE BELT TENSIONER toward the roll of tape to the desired pressure. Hold and tighten DRIVE BELT TENSION NUT.
7. Adjust tension on the tape by tightening the TENSION KNOB as required.

Plain Tape - (see diagram)

1. Loosen TENSION KNOB until HITCH PIN CLIP can be pulled out and RIGHT HAND SIDE can be removed.
2. Place new roll of tape over CENTER SHAFT.
3. Replace RIGHT HAND SIDE and HITCH PIN CLIP.
4. Adjust tension on the tape by tightening the TENSION KNOB as required.

Setting Wrap -

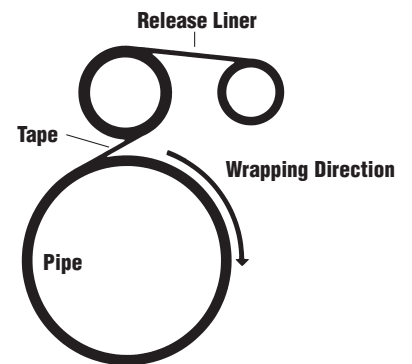
Cigarette Wrap - Set machine on flat surface, loosen LAP ADJUSTER, see that all four wheels are setting on the flat surface. Tighten LAP ADJUSTER.

Spiral Wrap - Loosen LAP ADJUSTER, raise wheel nearest the LAP ADJUSTER as required. The higher the wheel the greater the lap, tighten LAP ADJUSTER. This is a trial and error adjustment and will vary with different pipe sizes.

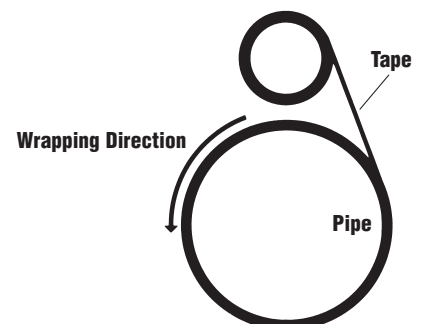
To Apply the Tape -

Hold the end of the tape away from the pipe surface, set the machine on the pipe, make sure all four wheels are touching the pipe, carefully lay the tape on the pipe surface smooth and straight and press it down. Then pull the machine in the direction as shown in the appropriate diagram, by the handle, around the pipe.

TAPE WITH RELEASE LINER

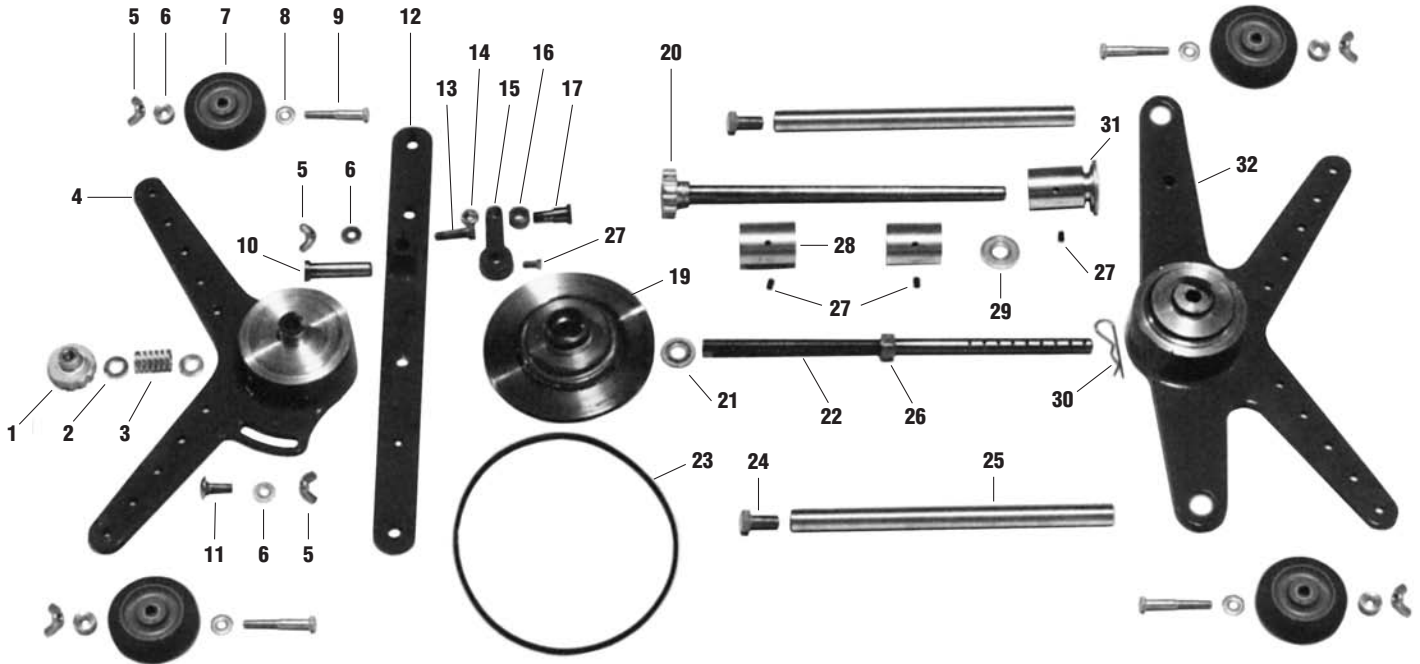


PLAIN TAPE



ACCUWRAP™ II

PARTS LIST



Parts List

No.	Amount	Description/Name	No.	Amount	Description/Name
1.	1	Knob, Tension	21.	1	Washer
2.	2	Washer	22-6.	1	Shaft, Center - 6"
3.	1	Spring	22-12.	1	Shaft, Center - 12"
4.	1	Wing - Left	22-18.	1	Shaft, Center - 18"
5.	6	Wing Nut	23.	1	Belt
6.	4	Spacer - only on 6" mach.	24.	2	Bolt
7.	4	Wheel Assy.	25-6.	2	Handle - 6"
8.	6	Washer	25-12.	2	Handle - 12"
9.	4	Bolt, Axle	25-18.	2	Handle - 18"
10.	1	Pin	26.	1	Nut
11.	1	Bolt, Clamp	27.	5-6	Screw, Set
12.	1	Bar Assy., Adjusting	28.	2-3	Spacer
13.	1	Bolt, Clamp	29.	1	Washer
14.	1	Nut	30.	1	Pin, Hitch
15.	1	Arm	31.	1	Pulley, Assy.
16.	1	Bearing	32.	1	Wing - Right
17.	1	Bearing Race - 29AJ	33.	1	Serial Tag
19.	1	Pulley	34-6.	1	Carton, Packing - 6"
20-6.	1	Knob/Shaft Assy. - 6"	34-12.	1	Carton, Packing - 12"
20-12.	1	Knob/Shaft Assy. - 12"	34-18.	1	Carton, Packing - 18"
20-18.	1	Knob/Shaft Assy. - 18"			

Since 1948, Sawyer Mfg. Company has specialized in the design and manufacture of pipeline and welding equipment that has become the "standard of the industry".

Sawyer Mfg. offers a complete line of pipe beveling and cutting machines and accessories that are adaptable to plasma cutting. Sawyer equipment is used worldwide in the construction of pipeline, waste water and sewer lines; gathering and distribution systems and other welding and pipeline applications.

Sawyer Products Include:

- Sawyer Band-Type Beveling Machines
- Sawyer Quick-Set Pipe Cutting & Beveling Machines
- Sawyer Compact Cutting & Beveling Machines
- Accuwrap™ Manual Pipe Wrapping Machines
- Out-of-round Torch Carriers
- Adjustable Torch Carriers
- Motor Drives
- Double Cut Torch Carriers
- Tractor mounted Bending Shoes
- Hydraulic Dent Removers
- Manual Pipe Expanders
- Pipe Hooks & Inserts
- Coupon Cutters
- Tensile & Guided Bend Testing Machines
- Internal Manual Line-up Clamps
- Internal Hydraulic Line-up Clamps
- External Line-up clamps
- Internal Jack Screw Clamp
- Aluminum Hand Clamps



SAWYER MFG COMPANY

1031 N. Columbia Place • Tulsa, Oklahoma 74110 U.S.A.

Phone: (918) 834-2550 • Fax: (918) 834-0318

E-Mail: info@sawyeremfg.com

Web Site: www.sawyeremfg.com

***Sawyer products are sold exclusively through distributors in the U.S. and abroad.
Please contact us for the name of your nearest distributor.***